

Electoral Area E Community Park and Trails Master Plan

DRAFT VISION STATEMENT:

“The residents of Electoral Area E seek to build on the existing community parks and trails to create a connected network of ecosystems, community parks and trails that provide access to nature, diverse opportunities for social connection and outdoor recreation, while enhancing the quality of life and health of all members of the community.”



GLENORA TRAILS HEAD PARK



BRIGHT ANGEL PARK



E & N RAILWAY

HIGHLIGHTS FROM COMMUNITY INPUT SO FAR...

ACTIVITIES that the community values included:

- passive, nature-oriented activities such as hiking, bird-watching, river kayaking and horseback riding, and
- fitness-oriented activities such as jogging.

Some new park amenities that were suggested in CURRIE PARK included:

- an outdoor fitness circuit,
- new picnic and BBQ facilities, and
- play spaces for a wider range of ages.

The community requested MORE:

- accessible nature trails,
- nature/culture interpretive signage, and
- more activities and community events in the parks.

There is a desire to:

- improve environmental protection,
- provide more opportunities for people to connect to nature, and
- ensure public access to the Cowichan River.

KEY ISSUES & CHALLENGES IDENTIFIED SO FAR...

PARK MANAGEMENT

- Undesireable/inappropriate use of parks due to remote locations and lack of on-site staff.

VOLUNTEERS

- Liability issues are preventing more volunteer involvement in community parks.

MAINTENANCE VS. DEVELOPMENT

- There is a need to balance park development with the ability to maintain and manage those amenities.

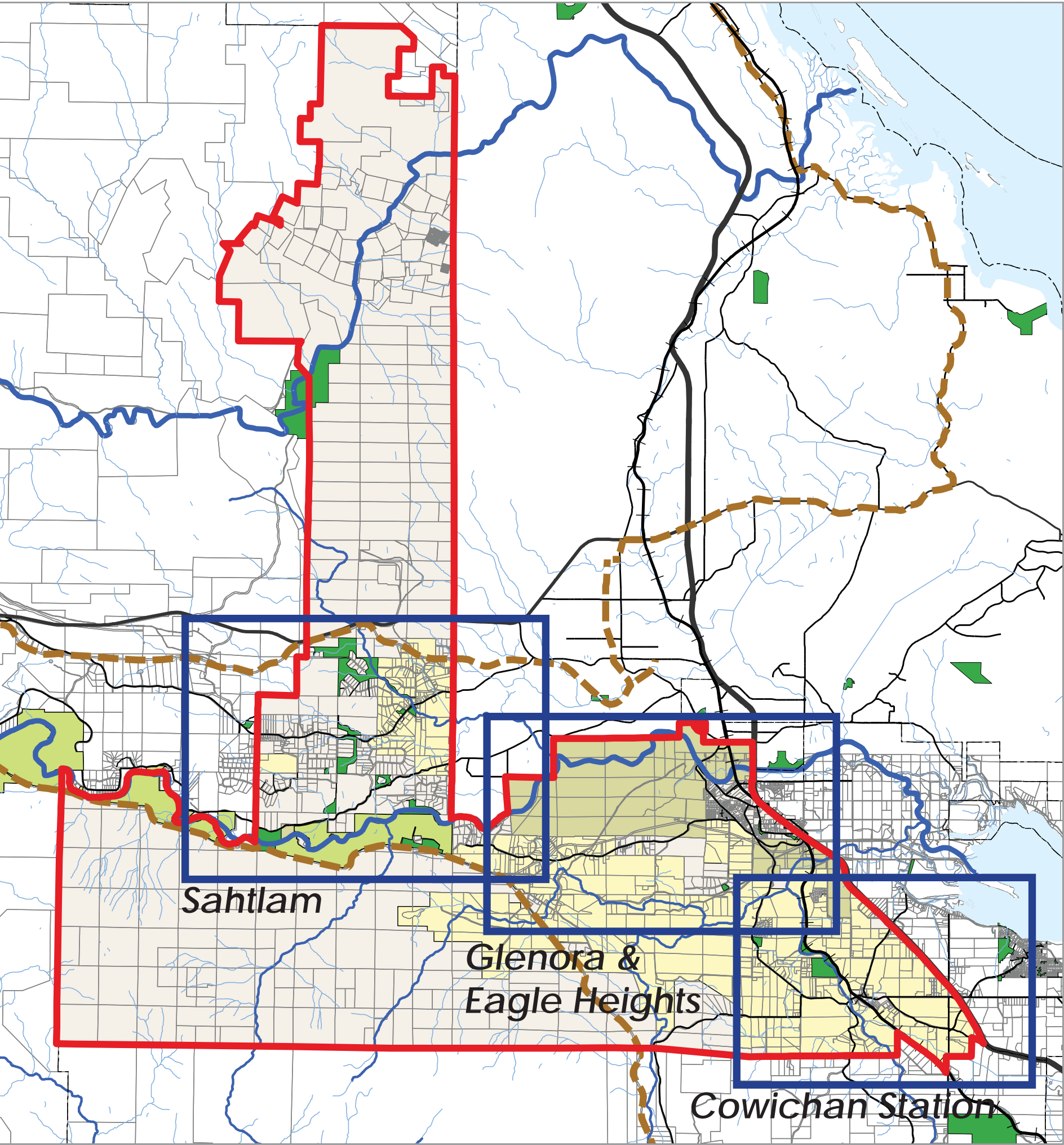
IMPORTANCE OF TRAILS

- Improve existing trails,
- construct new roadside connections,
- improve signage and maps, and
- create connections between key destinations.

HIGHLIGHT THE COMMUNITY

- The Cowichan Valley Trail could be enhanced to better highlight key features in the community.

ELECTORAL AREA E OVERVIEW MAP



COMMUNITY PARKLAND SUMMARY

Park Class	Total Area (hectares)
Community Park	14.26
Neighbourhood Park	1.96
Nature Park	89.09
River Corridor Park	0.18
Special Purpose Park	2.89
Linear Park	0.92
Sub-Regional Park	23.80
Total Community Parkland	133.10



SUMMARY OF PRELIMINARY RECOMMENDATIONS

Potential Trail Connections

Cowichan Station

- Connect Cowichan Station and Glenora between Jackson Road and Cavin Road.
- Connect Cowichan Station to Wilmont / Cow Bay.
- Consider a future Rail Trail along the existing, active E & N Railway from Cowichan Station to Duncan (potentially beyond).

Glenora and Eagle Heights

- Add a safe roadside trail connecting the Cowichan Valley Trail to Glenora Hall, Glenora Store and a proposed community park.
- Connect the Cowichan Valley Trail through Glenora to the Trans-Canada Highway #1.

Sahtlam

- Consider a potential roadside trail from Sahtlam Greenway to Hawkhill Park to the west.
- Potential roadside trail from Sahtlam Greenway to Currie Park and Creighton Road Park.
- Ensure safe routes connect new developments to the Sahtlam Greenway.
- Continue to work on implementation of the Sahtlam Greenway.
- Identify a location for a new pedestrian bridge across the Cowichan River to connect the Sahtlam Greenway to the Cowichan Valley Trail.
- Consider a future pedestrian bridge across the Cowichan River in Glenora Riverside Park.
- Consider a potential future trail connection between Sahtlam and North Cowichan via Gibbins Road.
- Caromar Trail (existing): Stop maintaining this route as it does not connect any destinations.

Existing Parks

- Maplewood Park: Create a redevelopment plan in consultation with neighbourhood residents.
- Keating Park: Maintain Keating Park as a passive, forested park. If the surrounding population increases, consider adding play spaces and a picnic shelter (or other amenities) in consultation with surrounding residents.
- Currie Park: Continue improvements to Currie Park including an accessible washroom and picnic shelter. Create a connection to Inwood Creek Park.
- Creighton Road Park: Explore potential for looping nature trails around the pond in Creighton Road Park.
- Inwood Creek Park: Explore potential for looping nature trails through Inwood Creek Park.
- Fairbridge Park: Consider disposal of this parcel in favor of acquiring other priority sites such as those along the Koksilah River.

New Parks

- A new community park could be developed across from the HUB in Cowichan Station, in partnership with the Cowichan Station Area Association.
- Identify opportunities to acquire land for a new neighbourhood park in Eagle Heights.
- Consider acquisition of a parcel between Glenora and Eagle Heights for a new community park to serve the future residential areas in Glenora and Eagle Heights.
- Dedicate the parcel in Glenora with existing ball diamonds as "Park". Identify opportunities to acquire adjacent parcels to create a multipurpose community park.
- Seek opportunities to acquire parcels along the Koksilah River between Bright Angel Park and Jack Fleetwood Park.

