

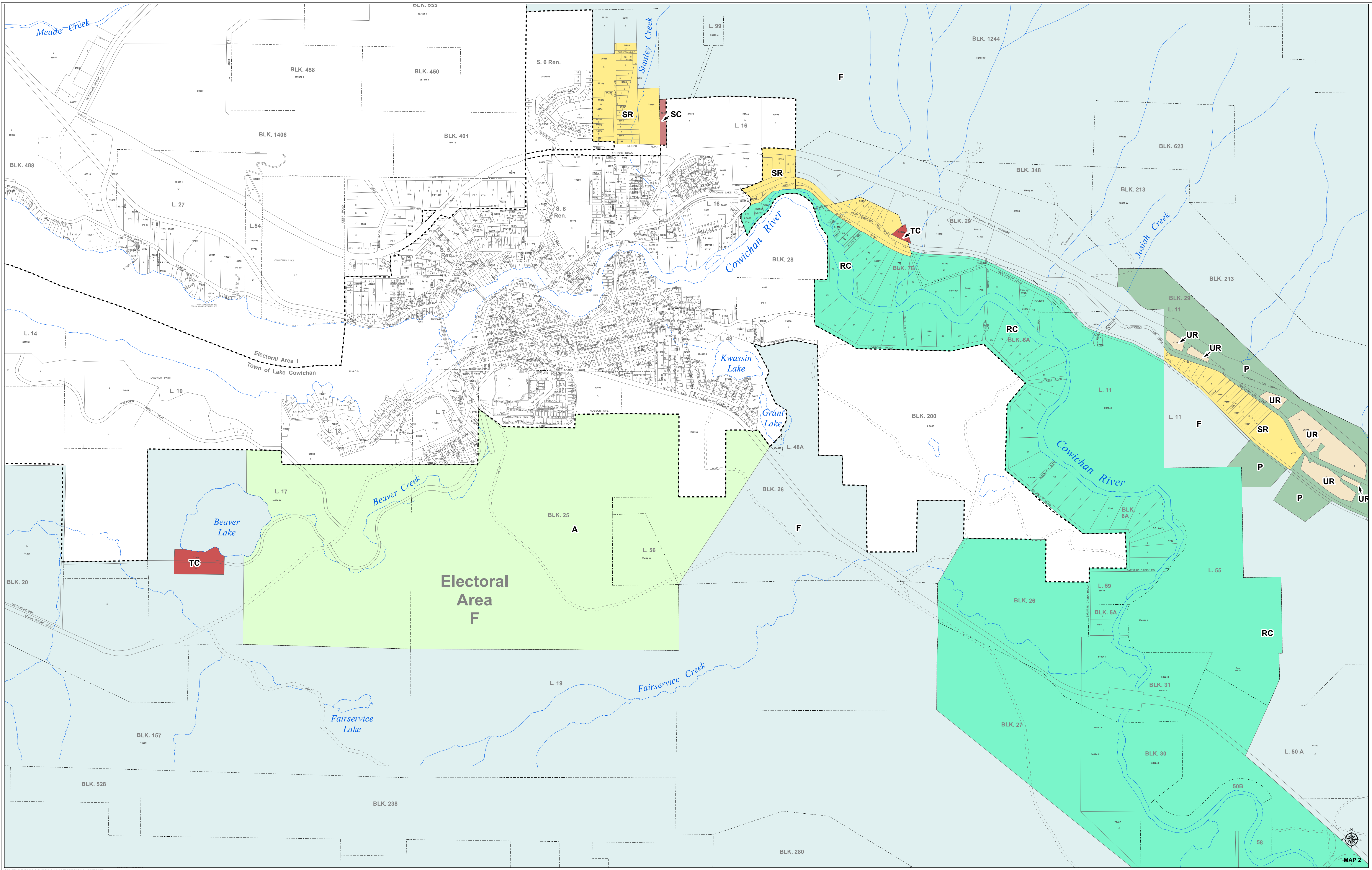
**ELECTORAL AREA F
 OCP**

Schedule 'B' of
 Official Community Plan
 Bylaw No. 1945, 1999

Map 2 of 3

**Official Community Plan
 Designations**

- EABDY_ARC
- A Agriculture
- F Forestry
- RR Rural Residential
- SR Suburban Residential
- HLR Honeymoon Bay Lakefront Residential
- UR Urban Residential
- LR Lakefront Residential
- RC River Corridor
- FDA Future Development Area
- C Local Commercial
- SC Service Commercial
- TC Tourist Recreational Commercial
- RVC Rural Village Commercial
- P Parks and Institutional
- H Heritage
- I Industrial



BYLAW AMENDMENTS

- Bylaw 2023 - Feb. 23, 2000
- Bylaw 2258 - Nov. 14, 2001.
- Bylaw 2359 - Jan. 8, 2003.
- Bylaw 2462 - Jan. 28, 2004.
- Bylaw 2576 - May 25, 2005.
- Bylaw 2664 - Nov. 9, 2005.
- Bylaw 3595 - Aug. 6, 2012.

SCHEDULE 'B' OF COWICHAN VALLEY REGIONAL DISTRICT
 OFFICIAL COMMUNITY PLAN BYLAW NO. 1945, 1999
 APPLICABLE TO ELECTORAL AREA F AS AMENDED.
 CONSOLIDATED FOR CONVENIENCE ONLY. OFFICIAL
 COPIES OF SCHEDULE 'B' ARE IN THE VAULT OF THE
 COWICHAN VALLEY REGIONAL DISTRICT OFFICES.
 THIS MAP REPRESENTS THE OFFICIAL COMMUNITY
 PLAN AND IS NOT A DEVELOPMENT PERMIT. FOR ASSISTANCE WITH INTERPRETATION
 OF THE BYLAW, PLEASE REFER TO CIVIC DEVELOPMENT
 SERVICES DEPARTMENT FOR ASSISTANCE WITH INTERPRETATION
 OF THE BYLAW.
 DATE OF ADOPTION : AUGUST 25, 1999

