

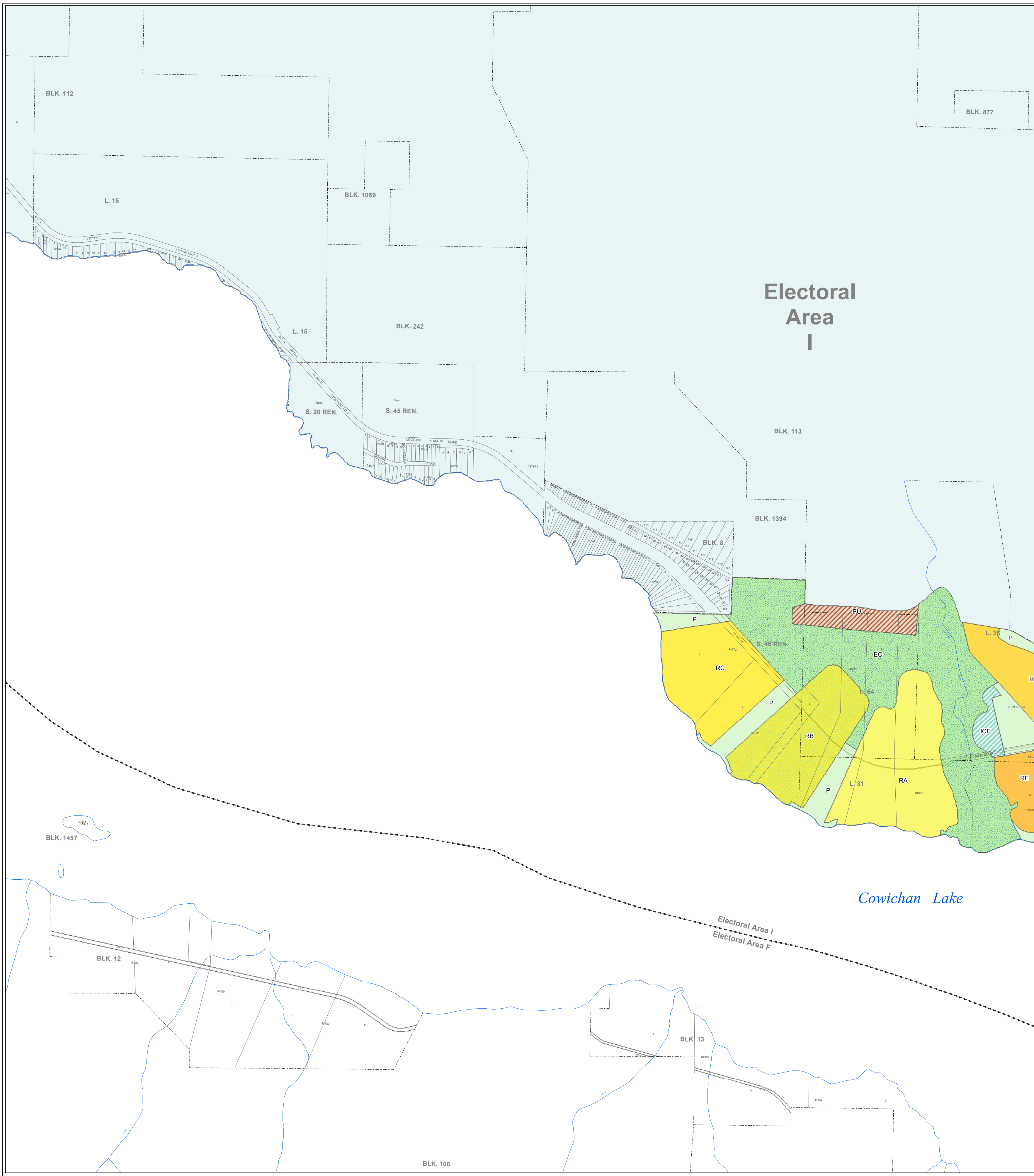
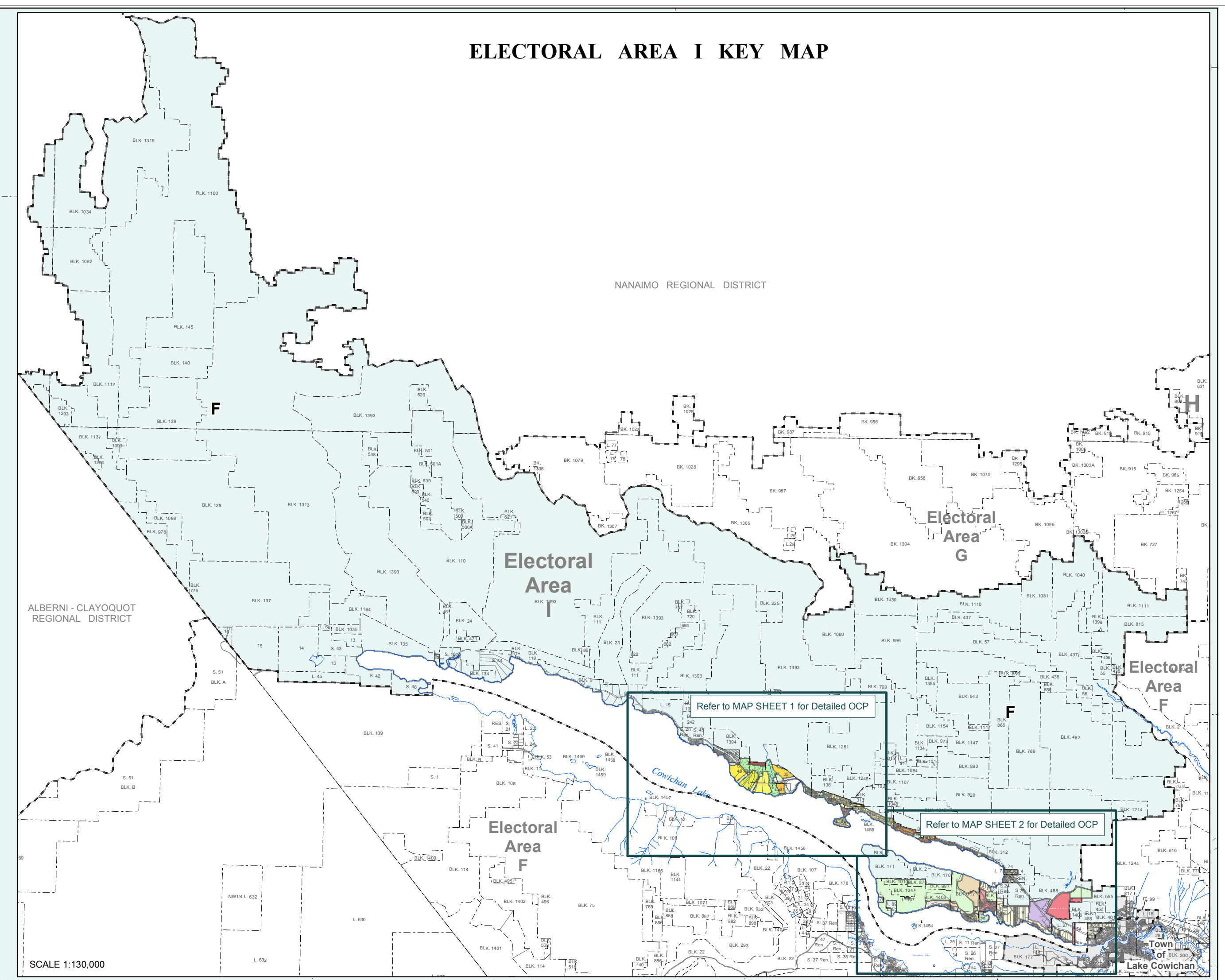
**ELECTORAL AREA I**  
**O C P**

Schedule 'B' of  
 Official Community Plan  
 Bylaw No. 2650

Map 1 of 2 - KEY / WEST  
**Official Community Plan**  
**Designations**

- F Forestry / Natural Resource
- FDA Future Development Area
- SR Suburban Residential
- R Urban Residential
- RA Residential A
- RB Residential B
- RC Residential C
- RD Residential D
- RE Residential E
- SLR Suburban Lakefront Residential
- MHR Manufactured Home Park Residential
- BMLCR Bald Mountain Lakefront Cottage Residential
- BMLPCR Bald Mountain Peninsula Comprehensive Residential
- CR Comprehensive Recreational
- C Local Commercial
- SC Service Commercial
- TC Tourist Commercial
- NPC Neighbourhood Pub Commercial
- VC Village Core
- WC Waterfront Commercial
- LI Light Industrial
- I Industrial
- P Parks and Institutional
- EC Environmental Conservation
- ICF Institutional and Community Facilities
- PU Public Utility

**ELECTORAL AREA I KEY MAP**

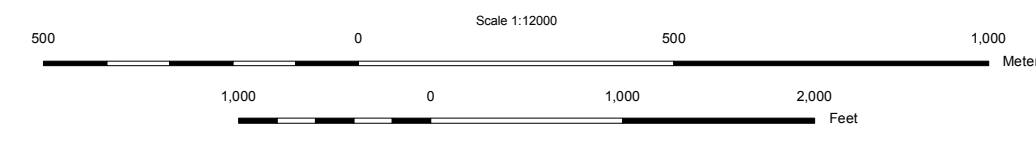


**ELECTORAL AREA I**  
 Youbou / Meade Creek - MAP SHEET 1  
 Scale 1:10,000

SCHEDULE 'B' OF COWICHAN VALLEY REGIONAL DISTRICT  
 OFFICIAL COMMUNITY PLAN BYLAW NO. 2650  
 APPLICABLE TO ELECTORAL AREA I AS AMENDED.  
 CONSOLIDATED FOR CONVENIENCE ONLY. OFFICIAL  
 COPIES OF SCHEDULE 'B' ARE IN THE VAULT OF THE  
 COWICHAN VALLEY REGIONAL DISTRICT OFFICES.

THIS MAP REPRESENTS THE OFFICIAL COMMUNITY  
 PLAN BYLAW. PLEASE REFER TO CVRD DEVELOPMENT  
 SERVICES DEPARTMENT FOR ASSISTANCE WITH INTERPRETATION  
 OF THE BYLAW.

DATE OF ADOPTION - NOVEMBER 9, 2005



OC P REVISION: JUNE 8, 2016  
 OCP AMENDMENT BYLAWS:

2978	
2983	
3059	
3213	
3957	
4013	